



# WADDESDON GREENWAY

A TRAFFIC FREE WALKING AND  
CYCLING ROUTE TO WADDESDON VILLAGE AND  
WADDESDON MANOR, A STRIKING RENAISSANCE-  
STYLE CHATEAU IN THE ENGLISH COUNTRYSIDE



**Chilternrailways**  
by arriva



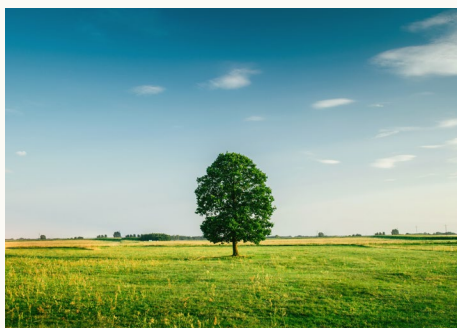
# What is the Waddesdon Greenway?

Waddesdon village is tantalisingly close to Aylesbury Parkway Station but the heavy traffic on the A41 has historically prevented all but the most experienced cycling to the station. In addition Waddesdon Manor attracts 400,000 visitors a year, almost all of whom arrive by car. Yet the Manor is less than 6kms from the Station, an easy cycle ride, and even a good walk.

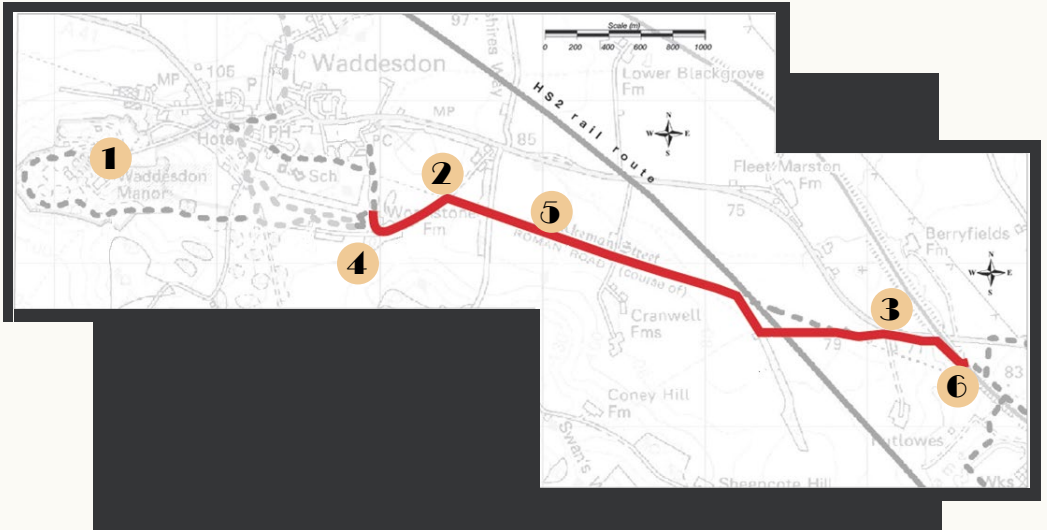
The Waddesdon Greenway is a new 2.5 mile walking and cycling route connecting Aylesbury with Waddesdon Manor and Waddesdon village. It provides a safe and pleasant year – round alternative to the heavily trafficked A41. It is almost level, suitable for wheelchair users, pushchairs and prams, and well provided with benches for resting and enjoying the open countryside views.

Now almost anyone can visit Waddesdon Manor in a sustainable car-free way, coming to Aylesbury Vale Parkway by Chiltern Railways and completing their journey on the Greenway.

The Greenway has been built through a partnership between the charitable company Greenways and Cyclerroutes Limited and Buckinghamshire County Council, with funding provided by the Department for Transport and Cycle Rail Working Group. The route was completed with the help and support of a range of community, public bodies and enthusiastic local volunteers.



# The Route



**1** Waddesdon Manor



**2** The Grand Drive



**3** Start of Akeman Street



**4** Wormstone Wood



**5** Akeman Street



**6** Aylesbury Vale Parkway



# About the Greenway

## Aylesbury

Aylesbury is a historic market town located in Buckinghamshire, with evidence of an Iron Age fortress in the vicinity dating from around 400 BC. From the 11<sup>th</sup> Century onwards, the town grew as a local market town, developing lacemaking, farming, printing and brewing industries over the following centuries. The Battle of Aylesbury in 1642 was a key royalist defeat during the English Civil War. Eminent features of the town today include the 1,200 capacity Waterside Theatre, the iconic County Council offices and the Bourg Walk bridge, which opened in 2009.

Aylesbury is growing at a rapid rate: in the 1960s the town had a population of 28,000 but by the 2011 census, this figure had grown to 72,000. With many new housing developments being planned and delivered around the town, including Berryfields and Kingsbrook, the population is expected to swell yet further in the future. This population growth and the opportunities for economic growth this facilitates means it is increasingly important that nearby communities can travel around the town both easily and sustainably. Aylesbury's establishment as one of six cycling demonstration towns nationally highlighted this. The link to Waddesdon via the Greenway is one of a number of exciting new developments expanding this scheme, with the aim of making Aylesbury a leading town for cycling infrastructure in the UK.





## **Waddesdon**

Waddesdon is a historic town in Buckinghamshire, with roots stretching back to the 12th Century. In the 1870s the village was expanded as the Rothschild family built houses for their employees following their acquisition of the Waddesdon estate and subsequent development of the manor. Today the village has a population of around 2100 and features a number of restaurants, cafes and pubs along its high street. Waddesdon Manor is a nationally significant tourist attraction, attracting approximately 400,000 visitors each year.

## **High Speed 2**

The Waddesdon Greenway crosses the proposed route of Phase 1 (London to Birmingham) of the High Speed 2 project. It is the first example of the vital local community links which will be needed along the length of High Speed 2. The HS2 plans include a farm access bridge, and only minimal modifications are required to accommodate the Greenway. These modifications are one of a number of cycling interfaces which the County Council and Greenways and Cyclerroutes Ltd are currently negotiating with High Speed 2 Ltd.

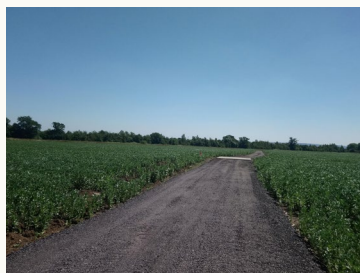
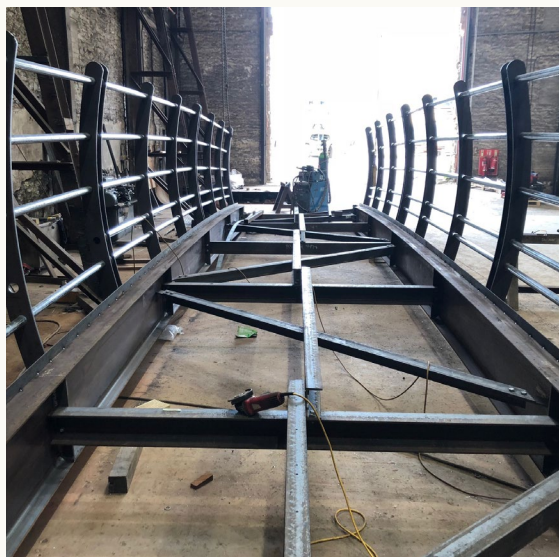
## **Historic background**

The Waddesdon Greenway follows the path of a historic Roman road Akeman Street which connected Cirencester and Bicester. Much of this route is now quiet lanes or footpaths. However, parts of the A41 between Berkhamsted and Bicester continue to follow Akeman Street, except for the short section from Waddesdon to Berryfields, where the Waddesdon Greenway follows the ancient Roman road line over two sections now marked with standing stones. The Waddesdon Greenway is the first path along this route to explicitly offer the chance to walk in the footsteps of the Romans.

## Route construction

In 2017, the Department for Transport and Cycle Rail Working Group agreed to fund the Waddesdon Greenway as a demonstration route of improving sustainable links between rural communities and their local rail stations. Greenways and Cyclerroutes Limited secured planning permission in December 2017. Work started in April 2018 with the clearance of the ground all along the route, the construction of causeways across the flood plain at Fleet Marston and a flood balancing excavation. Archaeologists supervised these works due to the proximity to the Roman town at Fleet Marston and the historic Roman road Akeman Street. Local ecologists supervised the Great Crested Newt Licence procedures.

The main contractor, Hazell and Jefferies Ltd., started work in May and the path was substantially completed by the end of June. A volunteer workcamp led by Greenways and Cyclerroutes Ltd then assembled the two main bridges along the route, built nearly 2,000 sand bags into culvert headwalls, made benches and installed chicanes. Hedges and copses of walnut and sweet chestnut to mark the line of the Roman road will be planted in the winter 2018.



# Key stakeholders

## Buckinghamshire County Council

The County Council has played a key coordinating role in realising this project, project managing the scheme, securing funding, and commissioning works. The Council is looking to bring forward a comprehensive walking and cycling network across the County and hope that the Waddesdon Greenway will become the first phase of a route linking communities along the line of the railway from Calvert to Uxbridge. The Council leads coordination of the negotiations with High Speed 2 Ltd on transportation issues, not only at Waddesdon, but over the whole length of the County. Finally, the County Council is also the Highway Authority and has managed the sections of the route along or crossing roads.



## **Greenways and Cyclerroutes Limited**

This charitable community benefit company works to bring forward key walking and cycling routes by negotiating agreements, gaining consents, raising funds and implementing the works. The Greenways model enables local supporters to manage, maintain and promote their own routes and make them a part of the community.

## **Chiltern Railways**

Chiltern Railways is an award winning train operating company and runs a number of rail routes between London and Birmingham. Crucially for the Waddesdon Greenway route, they provide a service which runs between London Marylebone and Aylesbury Vale Parkway – a significant tourism artery for the Greenway route. Bikes are permitted on most trains Monday – Friday, and all trains on Saturdays, Sundays or Public Holidays, subject to available space and staff discretion.





## **Waddesdon Manor and Estate**

The estates were purchased in 1874 by Baron Ferdinand de Rothschild and upon these grounds Waddesdon Manor, designed in the style of a Renaissance château, was built.

The house features many grand rooms, these interiors are filled with exceptional ornate decorations, eighteenth-century furniture, paintings and ornaments.

The grounds of Waddesdon are also exceptional. The garden features a parterre, a rose garden, and an ornate working aviary with a successful programme of breeding endangered species. On top of this, the wider grounds of the Waddesdon Estate are expansive and also widely accessible by the public through public rights of way.

Since the house was endowed to the National Trust in 1957 the house and gardens have become increasingly accessible to the general public—currently, both the house and grounds are open five days a week from late March to the end of the year, and weekends in January and February.

With Waddesdon Greenway complete, the house and grounds are now easily accessible to both walkers and cyclists travelling from Aylesbury Vale Parkway.



# Acknowledgements

The Waddesdon Greenway is a true community effort, and would not have been possible without the hard work and enthusiasm of many organisations and individuals. Particular thanks go to:

- The Cycle Rail Working Group, the Department for Transport and the Rail Delivery Group who have funded and provided invaluable guidance in progressing the scheme.
- Sustrans, the cycle charity responsible for over 14,000 miles of the National Cycle Network, for their ongoing support with progressing the development of the Buckinghamshire cycle network.
- Network Rail, New College Oxford and Thames Water for permission to use their land;
- Environment Agency, Aylesbury Vale District Council and NatureSpace for assistance in planning permission and licensing
- Cllr Paul Irwin and Waddesdon Parish Council; Stuart Grant, Sue Severn and Berryfields Parish Council;
- Waddesdon Manor and the Waddesdon Estate not only for allowing us to use their land, but for hosting and supporting the workcamp and so much else, and for their enthusiasm.
- Contractors and suppliers: Hazell and Jefferies for main construction work, Rand Contracting for preliminary groundworks, CTS Bridges and Sarum Hardwoods for supplying the bridges; Lakeside Films for the solar lighting; Greg Masters for fencing and gating, Olly Hallett for welding the sculptures, David Kent and Rupert Higgins for ecological supervision, Wessex Archaeology and Maltby Surveys for preliminary surveying.
- Volunteers: For the July 2018 Workcamp: Chris and Claire Grimshaw for catering – including breakfast for Jesse Norman MP and Lord Rothschild, David Gray was quartermaster and with Andy Tiplady, supervised construction of the metal bridge, Peter Huxford and the York Cycle group provided tools and presided over the wooden bridge, Keith Hallett designed the

metal sculptures and supervised their installation, David Judd and Andy Hatch installed posts and gates, and Steve Shrewsbury was principal joiner on the benches with Nicola Stinchcombe, Andy Small did everything, Simon Banbury and John Horne installed the solar lights, Kate Lowry was the camp artist, and Barbie Vellacott camp poet, Jim Conboy and Jem Grimshaw took photos and drone footage, Erik and Vicky Darby provided hospitality. Thanks also go to the following volunteers: Linda Addy, George Amos, John Barnes, Fiona Barns, Phillip Bond, Xavier Brice, Alison Brown, Ray Cahill, John Capell, Niall Cater, Tom Chalk, Gareth Charman, Sian Charman, Matthew Cole, Jim Conboy, Rupert Crosbee, Will Dawson, Steve Doe, Rich Driven, Steve Essam, Gill Flitney, Liv Grimshaw, Selma Grimshaw, Tuva Grimshaw, Katy Hallett, Martin Harvey, Andy Hatch, Chloe Hawthorne, Sue Homes, Matt Hughes, Peter Huxford, Richard Jennings, Phil Jordan, David Judd, Kieran Kennedy, Laura Leech, Roger Levett, Sue Lewin, Richard Lewin, Simon Lloyd, Ian Lowry, Sue Martin, Jessica Morris, Abigail Nichols, Robert O'Neill, Pat Osmond, Duncan Purchase, Corinne Randall, Matthew Ross, Jeremy Scothern, Chris Scutt, Hector Selth, Ian Sharp, Vinay Sivasankar, Shiv Shivasankar, Emma Silverton, James Silvester, Andy Small, Graham Smith, Shane Snow, Robert Taylor, Adrian Thompson, Chrissy Urry, Richard Vining, Beth Vining, Tracy Walker, Howard Warrener, James Wilks, and the children of Waddesdon Primary School.

- Giles Woodward is the Greenways Solicitor, Bonnie Doe handled publicity and local contacts, Asha Goyal, Paul Boston, Jane Debney and Caroline Back produced documents and reports, Mike Farley provided text for the interpretation panels.
- For Buckinghamshire County Council Jack Mayhew handled negotiations, coordinated the funding and publicity, and smoothed the path with HS2 and many others. Corinne Randall and Jacob Leach led coordination of the opening ceremony.
- The path was designed by John Grimshaw, honorary engineer for Greenways who also supervised all construction of the route. The project was administered for Greenways and Cyclerroutes by Caroline Levett.
- Photo credits: [www.chartridgephotographic.co.uk](http://www.chartridgephotographic.co.uk)

# Timings

TIME	EVENT
09:30	London contingent meet at Marylebone with Chiltern Railways reps. Photographs with banners. Event will take place on Marylebone's concourse, near barrier line
09:57	Train leaves London Marylebone (MYB) for Aylesbury Vale Parkway (AVP)
10:45	Aylesbury Vale Parkway event opens to public
11:03	Chiltern Railways train arrives at AVP
11:10	Speeches at AVP
11:20	Ribbon cutting and formal opening of the Waddesdon Greenway
11:30	Guided Greenway cycle ride begins
11:40	Shuttle bus to Waddesdon for those not cycling
12:00	Bus from AVP arrives at Waddesdon. Refreshments provided
12:15	Cyclists arrive at the Waddesdon Welcome Pavilion
12:30	Waddesdon Welcome and speeches
12:45	Event closes. Free access to Waddesdon's manor grounds available (grounds close 5pm)
12:45	VIPs bused to Five Arrows Hotel for VIP reception
13:00	VIP reception at Five Arrows Hotel starts. Finger sandwich lunch
13:30	Closing speeches
14:00	End of VIP reception. Guests taken by Waddesdon bus to the manor drop off point for short viewing and group photo
14:40	VIPs bused back to AVP to meet 15:13 AVP-MYB (arrives 16:20)
	Alternative return at 16:15 – Waddesdon shuttle bus departs from the Waddesdon Manor Welcome Pavilion.

**Facilities:** Toilet facilities are located within Aylesbury Vale Parkway Station and at Waddesdon Welcome Pavilion.